

# Large Farm Equipment AUCTION

THURSDAY, SEPTEMBER 18 | 10AM

Location: 1801 NW 130th Street, Aberdeen, SD. From Aberdeen, SD, approx. 2 miles north on Hwy. 281 to Brown County Rd. 13, east side of road.

**AUCTIONEER'S NOTE:** The Berbos' have rented out the farm. Please note the late model combines, tractors, and planting equipment. Most pieces were purchased new with an excellent maintenance program in place. **Major equipment begins selling at 11:30 AM.** Live online bidding available on major equipment. Registration, terms, & details at [SteffesGroup.com](http://SteffesGroup.com)



### 4WD TRACTORS

**2010 Case-IH Steiger 485**, luxury cab, leather, buddy seat, powershift, 5 hyd., return flow, 1000 PTO, Ag Leader EZ Guide 500 auto steer, front & rear diff lock, HID lights, rotary beacon, 710/70R42 metric duals, 1,431 hrs., S/NZAF118777  
**2009 Case-IH Steiger 535HD**, deluxe cab, powershift, 4 hyd., power beyond, return flow, 1000 PTO, Ag Leader EZ Guide 500 auto steer, front & rear diff lock, HID lights, rear inside suitcase weight pkg., front suitcase weights, tow cable, 520/85R46 factory triples, 2,624 hrs., S/NZ9F113083  
**2009 Case-IH Steiger 435**, deluxe cab, buddy seat, powershift, 4 hyd., power beyond, return flow, 1000 PTO, Ag Leader EZ Guide 500 auto steer, 520R85R42 factory triples, 2,610 hrs., S/NZ8F111635  
**2009 Case-IH Steiger 435**, deluxe cab, buddy seat, powershift, 4 hyd., power beyond, return flow, 1000 PTO, Ag Leader EZ Guide 500 auto steer, 520/85R42 factory triples, 3,167 hrs., S/NZ8F111700  
**1997 Case-IH 9380**, N14 Cummins, powershift, 4 hyd., Ag Leader EZ Guide 500 auto steer, 20.8-38 factory triples, duals 70%, outside 40%, 6,626 hrs., S/NJEE0068380

### MFWD & 2WD TRACTORS

**1998 Case-IH 8920**, MFWD, 18 spd, powershift, 4 reverse, 3 hyd., 3 pt., quick hitch, 540/1000 PTO, New Buhler 2895 quick tach loader & grapple, front suitcase weights, 18.4-42 singles, 14.9-30 front tires, 18.4-42 press steel hub duals, 4,211 hrs., S/NJJA086282  
**1995 Case-IH 7220**, 2WD, 18 spd, powershift, 4 reverse, 3 hyd., 3 pt., 540/1000 PTO, diff lock, 18.4-42 singles, shows 6,853 hrs., S/NJJA0059808  
**1982 Case 2000**, 2WD, 12 spd, powershift, 2 hyd., 3 pt., 540/1000 PTO, diff lock, 18.4-38 rear tires, shows 5,360 hrs., S/N9921649  
**IHC 806 Standard**, Lundeen cab, 2 hyd., 540/1000 PTO, 18.4-34 tires, shows 9,171 hrs.

### EXCAVATOR & DOZER

**2006 Komatsu PC160LC-7KA** excavator, hyd. thumb, 34" bucket, 24" tracks, 2,717 actual hrs., S/NKMTPC047P55K41108  
**1975 Caterpillar D7F dozer**, ROPS full canopy, 3 spd. forward/reverse, hyd. 11" dozer, deep lug tracks Caterpillar cable winch for Caterpillar D7 31E7943

### SKID STEER LOADERS

**Bobcat 773 Turbo skid steer loader**, cab, heat, foot controls, aux. hyd. & electric, quick tach 60" bucket, 265/70D16.5 tires, 2,000 hrs.  
**Bobcat 642B skid steer loader**, ROPS, gas, aux. hyd., quick tach bucket mounts, 10-16.5 tires, 3,192 hrs.  
**Alltec quick tach snow bucket**, 78", bolt-on cutting edge  
**Bobcat quick tach snow bucket**, 90", S/N504027606  
**Bobcat hyd. quick tach posthole auger**, 9" bit  
**Quick tach pallet forks w/back rest**, 42" forks

### HARVEST EQUIPMENT

**2011 Case-IH 7120**, luxury cab, leather, buddy seat, AFX rotor, Field Tracker, deluxe controls, Pro 600 with integrated auto steer, power reverser, rock trap, chopper, long auger, power tailboard spreader, Y&M, electric mirrors, rotary beacon, both sets concaves, rear hitch, 520/85R42 straddle duals, 28L-26 rear tires, 658 sep. hrs., 794 engine hrs., S/NYBG212747  
**2011 Case-IH 7120**, deluxe cab, buddy seat, AFX rotor, Field Tracker, deluxe controls, Pro 600 with integrated auto steer, power reverser, rock trap, chopper, long auger, power tailboard spreader, Y&M, electric mirrors, rotary beacon, both sets concaves, rear hitch, 520/85R42 straddle duals, 28L-26 rear tires, 568 sep. hrs., 691 engine hrs., S/NYBG212772

### HEADS

**2010 Case-IH 2162 flex draper head**, 40", fore/aft, AHH, finger reel, light kit, single pt. Case-IH AFX hookup, S/NYAZN13190  
**2010 Case-IH 2162 flex draper head**, 40", fore/aft, AHH, finger reel, light kit, single pt. Case-IH AFX hookup, S/NYAZN13192  
**2010 Case-IH 3412-30 corn head**, 12x30", knife rolls, hyd. deck plates, outer gathering ext., S/NYAS018216  
**2008 Case-IH 3412-30 corn head**, 12x30", knife rolls, hyd. deck plates, outer gathering ext., S/NY8S018543  
**IHC 810 rigid head**, 20" Sund pickup, perforated screened bottom

### GRAIN CARTS

**2012 Unverferth 1315 Xtreme grain cart**, 36" tracks, roll tarp, light pkg., DigiStar electronic scale, S/NB27-870-139

### GRAIN CARTS

**2011 Brent 1194 grain cart**, 1,100 bu., roll tarp, 36" tracks, light pkg., & electric, quick tach 60" bucket, 265/70D16.5 tires, 2,000 hrs.  
**2011 Unverferth 1110 grain cart**, 1,100 bu., roll tarp, 36" tracks, light pkg., light pkg., electronic scale, S/NB24-760-113

### PLANTERS

**2012 JD DB80**, CCS, 48x20", Refuge Plus, variable rate, pneumatic down pressure, Totally Tubular liquid in-furrow, Redball monitor, Dawn hyd. row cleaners, Dakon closing wheel, RowCommand, John Blue ground drive pump, rear hitch, rear plumbing, weight pkg., wide spaced heavy duty main tires, S/N1A0DB80YE745114  
**2011 JD DB90**, CCS, 36x30", variable rate, pneumatic down pressure, Totally Tubular liquid in-furrow, Redball monitor, Dawn row cleaners, Dawn closing wheel, RowCommand, Dempster ground drive pump, rear hitch, rear plumbing, weight pkg., heavy duty main tires, S/N1PAM3630EA0740142

### AIR DRILLS

**1997 JD 1850 air seeder**, 42", 7-1/2" & 15" space, JD 787 twin compartment cart, 230 bu., hyd. fill auger, Haukaas sidearm markers  
**1997 JD 1850 air seeder**, 42", 7-1/2" & 15" space, JD 787 twin compartment cart, 230 bu., hyd. fill auger, Haukaas sidearm markers

### TILLAGE EQUIPMENT

**2013 JD 2623VT Soil Management System**, 40"8", rock flex, 7-1/2" space, 22" blades, rear wave 22" coulters, discs, rear hyd. crumbler baskets, tandems across, single pt. depth, S/N1N02623JPD0750758  
**2011 Salford 570 RTS**, 41", tandems across, heavy duty center walking tandems, rolling baskets, weight pkg., single pt. depth, 3-bar harrow, S/N103543  
**2011 Summers disc chisel**, 38", rock flex, tandems across, full floating hitch, hyd. down pressure front discs, heavy duty trip shanks, Summers rear chopping crumblers, factory rear hitch, S/NK1233  
**2008 Riteway 4500 land roller**, 60', 42" drum, S/N45-50-4  
**Wil-Rich Quad 5 field cultivator**, 50", walking tandems, full floating hitch, heavy duty trip shanks, 4-bar harrow, flotation tires across  
**Amco tandem disc**, 38", rock flex, 9" space, 22" blades, tandem duals

### TRUCKS

**2006 Freightliner Columbia**, 60" flat top integral sleeper, fairing, 60 Series Detroit, 430 hp., Eaton 10 spd., Jake brake, air ride, air slide 5th, cruise, diff lock, power windows & mirrors, chrome bumper, (2) aluminum fuel tanks, 230" WB, 295/75R22.5 tires, front aluminum & rear steel rims, shows 624,229 miles  
**1987 Peterbilt 379**, 36" flat top sleeper, 3406B Cat, Eaton 9 spd., engine brake, air ride, air slide 5th, diff lock, (2) aluminum fuel tanks, 22" WB, 11R24.5 front tires on steel rims, 11R24.5 rear tires on aluminum rims, shows 55,719 miles  
**1996 Freightliner FLD120**, 40" flat top sleeper, N14 Cummins, Eaton 10 spd., air ride, air slide 5th, cruise, diff lock, (2) aluminum fuel tanks, 12,000 lb. fronts, 20,000 lb. rears, 22" WB, 295/75R22.5 tires on steel rims, shows 52,185 miles  
**1991 Freightliner FL120**, 36" flat top sleeper, 350 Cummins, Eaton 13 spd., engine brake, air ride, air slide 5th, (2) 150 gal. aluminum fuel tanks, 12,000 lb. fronts, 20,000 lb. rears, 22" WB, 11R22.5 front tires on steel rims, shows 538,649 miles  
**1990 IHC 8300 tandem axle**, 350 Cummins, Eaton 9 spd., spring ride, diff lock, wet kit, 248" WB, Willmar Loadrunner fertilizer tender, (2) rows lights, pintle hitch, rear air & electric, 11R24.5 tires on steel rims  
**1991 Timpte Super Hopper hopper bottom**, 42"x96"x90", non-ag hopper, spring ride, roll tarp, Shurco ProTrap electric trap openers w/remotes, front & rear ladders, catwalks, (2) rows lights, pintle hitch, rear air & electric, 11R24.5 tires on steel rims

### PICKUPS & VAN

**1981 Chevrolet C30 Scottsdale**, 454, 4 spd., 4WD, lockouts, heavy duty front bumper, Warn 8,000 lb. winch, 9" Obeco service body w/compartments, air hose w/reel, 200 gal. fuel service tank w/12v pump, shows 18,640 miles  
**1990 Ford F150 XLT Lariat**, ext. cab, 6-1/2' box, 5.8 liter EFI, 4WD, lockouts on front hubs, power windows & locks, 235/75R15 tires, shows 66,487 miles  
**1989 Ford Clubwagon**, V8, automatic, 7 passenger, A/C, tilt, cruise, rear A/C & heat, shows 53,100 miles

### HOPPER BOTTOMS

**2013 Timpte Super Hopper hopper bottom**, 50'x102'x90", air up/down 3rd axle, ag hopper, air ride, roll tarp, air scale, Easy Flow hyd. trap openers w/remotes, front & rear ladders, catwalks, (2) rows LED lights, 11R24.5 tires, (10) aluminum rims  
**2012 Timpte Super Hopper hopper bottom**, 50'x102'x90", air up/down 3rd axle, ag hopper, air ride, roll tarp, air scale, Timpte hyd. hopper openers w/remotes, front & rear ladders, catwalks, (2) rows LED lights, 11R24.5 tires, (10) aluminum rims  
**1997 Timpte Super Hopper hopper bottom**, 42"x96"x90", non-ag hopper, spring ride, roll tarp, Shurco ProTrap electric trap openers w/remotes, front & rear ladders, catwalks, (2) rows lights, 11R24.5 tires on steel rims  
**1993 Timpte Super Hopper hopper bottom**, 42"x96"x90", non-ag hopper, spring ride, roll tarp, Shurco ProTrap electric trap openers w/remotes, front & rear ladders, catwalks, (2) rows lights, pintle hitch, rear air & electric, 11R24.5 tires on steel rims

### TRAILERS

**2012 Witzco Challenger NGB-35 tri-axle RGN lowboy**, 48'x102', 22' well, air ride, self-contained hyd., B&S 14-1/2 hp. motor, electric start, swing-out outriggers, D-rings, open center between cross members, 11R22.5 tires on steel rims  
**(2) Unverferth Roadrunner 636 tandem axle header trailers**, torsion axle, light kit, adj. hitch, brackets with tie downs  
**1970 Fruehauf steel flatbed trailer**, 30'x96"x48" steel sides, spring ride, 3,200 gal. poly tank, 3" Banjo fitting, 11R22.5 tires on spoke rims  
**1984 Super tandem axle car trailer**, 16'x78", wood deck, 2" ball hitch, 7R14.5 tires on spoke rims  
**Shop-built tandem axle skid steer trailer**, 6'x10', steel deck, flip-up ramps, 2" ball hitch, 7:00-15 tires on 6-bolt hubs  
**CHEMICAL/FERTILIZER EQUIPMENT**  
**2011 Force Mfg. tow behind liquid fertilizer cart**, 1,600 gal., 18.4-26 bar heavy duty R4 tires

### CHEMICAL/FERTILIZER EQUIPMENT

**(2) Tow-between liquid caddies**, 1,500 gal. Pleasure Products tanks, ground drive pumps, hyd. agitation, 18.4-26 tires  
**GRAIN HANDLING EQUIPMENT**  
**1992 Farm Fans CF1500H stackable continuous flow dryer**, 3 phase, 6 burner fan, electronic temp control, 3,827 hrs., not set up, S/NC-23004  
**Westfield MK130-111 Plus auger**, mechanical swing low pro hopper, hyd. hopper walker  
**Westfield MK13-71 auger**, mechanical swing low pro hopper  
**Bergen auger**, 60"x10", PTO  
**D&R Mfg. Boss drive-over conveyor**, 90", 20" belt, PTO  
**Asst. aeration tubing & fans**

### OTHER EQUIPMENT

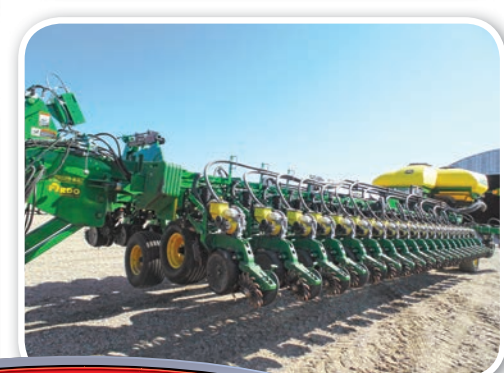
**Rowse twin sickle mower**, 9' bars, PTO hyd. pump  
**Haybuster H106 rockpicker**, high lift, 10' windrow bar, S/N952650  
**Fair Mfg. heavy duty snowblower**, 8", double "Snocrete" blower, 3 pt., 1000 PTO  
**(3) 1,550 gal. poly tanks**  
**Lincoln WeldanPower AC-225/DC210/6 welder generator w/leads**  
**Set front dual spacers**, 16-1/2", 10-bolt  
**Asst. IHC suitcase weights**  
**Misc. farm support items**

### BOAT

**1987 Lund Cherokee fiberglass boat**, 17', Johnson GT150 V6 outboard motor, walk-through windshield, (4) pedestal seats, 1987 Spartan roller trailer, 2" ball hitch

### TIRES

**(2) Firestone 480/80R42 tires**, 23 degree radials, New  
**(14) Firestone 295/75R22.5 virgin 14-ply tires**, New  
**(4) Firestone 520/85R38 tires**, 23 degree radials, New  
**(4) Firestone tires**, 31-13.50R15, for air seeders, New  
**(3) 31-13.50R15 implement rib tires**, New  
**(2) 11R22.5 tires**, 14-ply, New  
**(2) 11R24.5 tires on rims**, 14-ply, New  
**12.5L-15 F1 implement tire on rim**, New tire  
**(4) Firestone LT265/75R16 tires**, Load Range E, New  
**Misc. implement truck, trailer & tractor tires & rims**



**TERMS:** All items sold as is where is. Payment of cash or check must be made sale day before removal of items. Statements made auction day take precedence over all advertising. \$35 documentation fee applies to all titled vehicles. Titles will be mailed. SD sales tax laws apply. Canadian buyers need a bank letter of credit to facilitate border transfer.

## BERBOS FARMS

Joe Berbos & Nick Berbos

For information contact Joe Berbos, 605.530.4971 or Brad Olstad at Steffes Group, 701.237.9173

Steffes Group, Inc., 2000 Main Ave East, West Fargo, ND 58078

Brad Olstad ND319, Scott Steffes ND81, Bob Steffes ND82, Ashley Huhn ND843, Eric Gabrielson ND890, Randy Kath ND894 | 701.237.9173 | [SteffesGroup.com](http://SteffesGroup.com)

